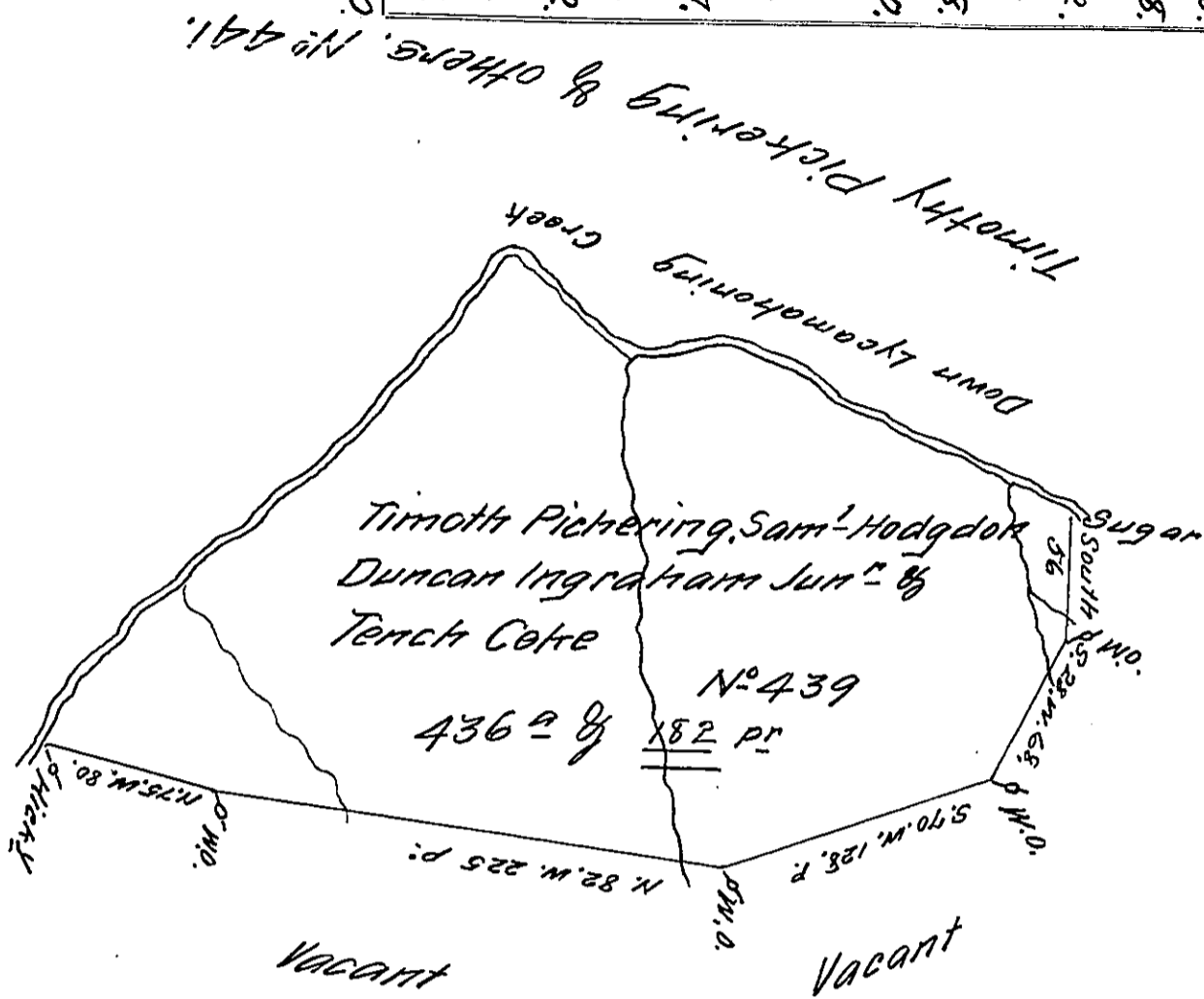


- Courses up Lycamatonning
- N. 8. E. 20.
 - N. 36. E. 20.
 - N. 51. E. 108.
 - N. 55. E. 32.
 - N. 43. E. 81.
 - N. 26. E. 38.
 - S. 82. E. 20.
 - S. 36. E. 18.
 - S. 44. E. 38.
 - N. 83. E. 54.
 - S. 66. E. 40.
 - S. 58. E. 42.
 - S. 73. E. 30.
 - S. 67. E. 39.
- 600



A Draught of a Tract of Land situate on the south side of Lycamatonning Creek including the Old Town in the County of Northumberland within the last purchase made of the Indians. Containing four hundred and thirty six Acres and One hundred and eighty two perches with the usual Allowance of six p^c Cent for Roads &c^o. Surveyed for Timothy Pickering, Saml Hodgdon, Duncan Ingraham Junr and Tench Coxe the 31st Day of May 1786. In pursuance of a warrant Dated May 17th 1785.

Nº 439.

George Woods Junr D.S.

To John Lukens Esq^r S.G.

IN TESTIMONY that the above is a copy of the original remaining on file in the Department of Internal Affairs of Pennsylvania, made conformably to an Act of Assembly approved the 16th day of February, 1833, I have hereunto set my Hand and caused the Seal of said Department to be affixed at Harrisburg, this eleventh day of October 1911.

Henry Horck
Secretary of Internal Affairs.